

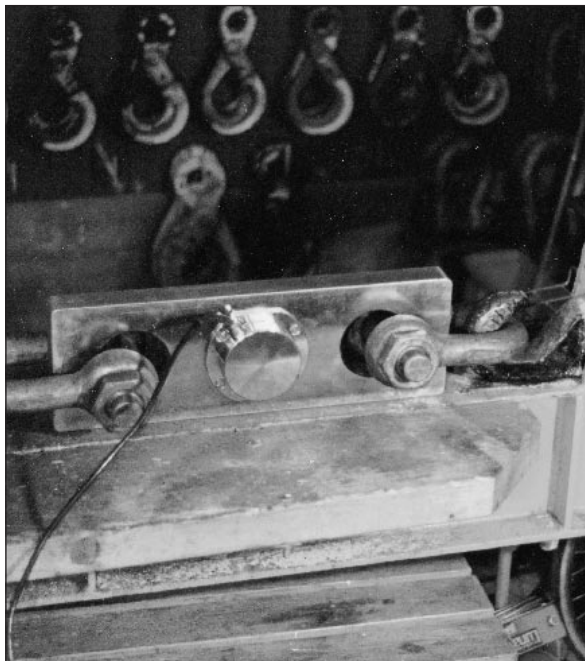
EXAMPLES OF THE PIAB LL LINK IN USE



Testing overload guards at a paper mill by means of water weights. The reading is taken by a PIAB Remote Read-Out Instrument.



Here the PIAB LL Link and Instrument are used when weighing engine parts.



Check-up on lifting tools.



Test of towing winch at an ice-breaker.

LL LINK AND REMOTE READ-OUT INSTRUMENT



The PIAB LL Link is designed to measure forces and weights in an aggressive environment and conforms to the International Protection Specification Class IP 67 acc. to IEC 529.

PIAB™

PIAB™ 

Force Measurement

PIAB AB, Box 123, S-184 22 Åkersberga, Sweden.
Phone Int +46-8-540 825 00. Fax Int +46-8-540 213 64.

RANGE OF APPLICATION

The PIAB LL Link is designed to measure tension forces and weights. It is made to withstand extreme environmental conditions and conforms to the International Protection

Specification Class IP 67 (dust-proof and water pressure tight) acc. to IEC 529. For a very aggressive environment polyester lacquering is recommended.

FUNCTION

The tension force affecting the LL Link is measured by means of strain gauges. Four strain gauges are connected in a Wheatstone bridge and fed with a stabilized voltage. The signal output from the bridge is proportional to the force on the LL Link. The signal is amplified, converted and the force (weight) is shown on

the digital display (LCD) of the Remote Read-Out Instrument.

The Remote Read-Out Instrument and LL Link are operated by a built-in 9 V battery. An extension cable can be connected between the Link and Instrument.

The Link and Instrument are delivered in a tough transport case with space provided for a 33 ft. (10 m) extension cable.



DIMENSIONS OF TRANSPORT CASE

DIMENSIONS IN INCHES AND (MM)

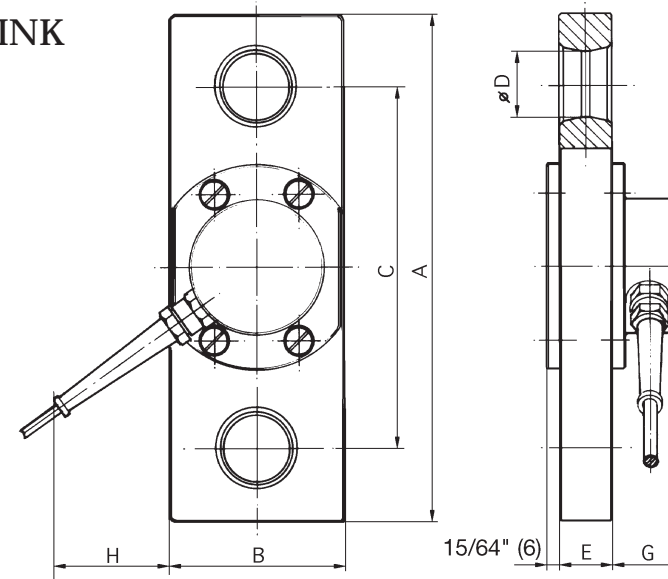
4400 lb., 6600 lb., 11000 lb. & 22000 lb. (2, 3, 5 & 10 ton):
14.61/64 x 9.1/4 x 5.1/2"
(380 x 230 x 140 mm)

44000 lb. (20 ton):
18.1/2 x 9.54/64 x 5.1/2"
(470 x 250 x 140 mm)

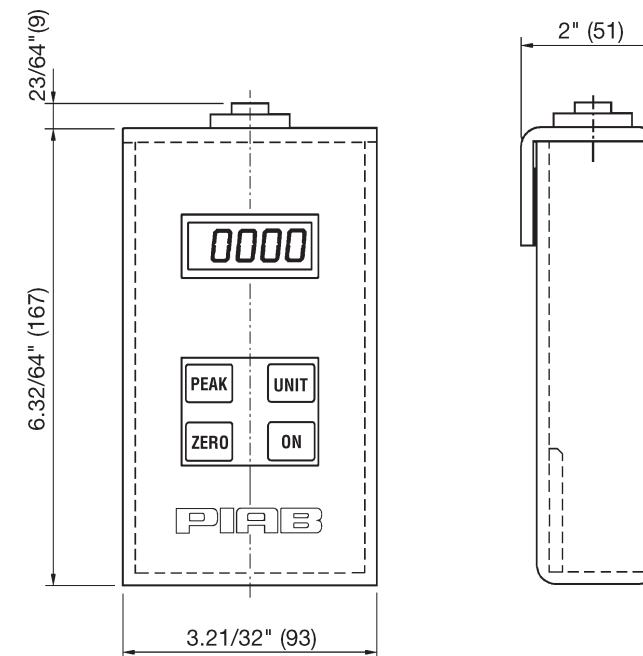
110000 lb. (50 ton):
24.1/64 x 11.27/64 x 5.1/2"
(610 x 290 x 140 mm)

165000 lb. (75 ton):
24.38/64 x 11.27/64 x 5.1/2"
(650 x 290 x 140 mm)

LL LINK



INSTRUMENT



ART.NO.	TYPE	CAPACITY LB. (TON)	RESOLUTION 1/300 LB. (KG)	WEIGHT LB. (KG)	DIMENSIONS IN INCHES AND (MM)							
					A	B	C	D	E	F	G	H
302332	LLI-2	0-4400 (0 - 2)	2 (1)	5.7 (2.6)	8.1/8 (205)	2.46/64 (69.3)	5.58/64 (150)	1.1/64 (26)	25/32 (20)	15/64 (6)	1.7/32 (31)	2.43/64 (68)
302337	LLI-3	0-6600 (0 - 3)	2 (2)	5.9 (2.7)	8.1/8 (205)	2.54/64 (72.4)	5.58/64 (150)	1.1/64 (26)	25/32 (20)	15/64 (6)	1.7/32 (31)	2.43/64 (67)
302342	LLI-5	0-11000 (0 - 5)	5 (2)	11.1 (5.0)	10.1064 (258)	3.34/64 (89.6)	7.15/64 (184)	1.22/64 (34)	1.1/16 (27)	15/64 (6)	1.11/32 (34)	2.9/32 (58)
302347	LLI-10	0-22000 (0 - 10)	10 (5)	15.6 (7.1)	11.52/64 (300)	3.49/64 (96)	8.1/32 (204)	1.52/64 (46)	1.3/8 (35)	15/64 (6)	1.11/32 (34)	2.13/64 (56)
302352	LLI-20	0-44000 (0 - 20)	20 (10)	42.7 (19.4)	16.35/64 (420)	5.51/64 (147)	11.27/64 (290)	2.23/64 (60)	1.27/32 (47)	15/64 (6)	1.27/64 (36)	2 (50)
302362	LLI-50	(0 - 50) 0-110000	50 (20)	66.0 (30.0)	21.17/64 (540)	7.23/64 (187)	13.50/64 (350)	3.47/64 (95)	1.27/32 (47)	15/64 (6)	1.27/64 (36)	1.3/16 (30)
302377	LLI-75	(0 - 75) 0-165000	100 (50)	110.0 (50.0)	22.2/64 (560)	7.23/64 (187)	13.50/64 (350)	3.47/64 (95)	3.1/32 (77)	15/64 (6)	1.27/64 (36)	1.3/16 (30)

TECHNICAL DATA

LL LINK

ACCURACY
± 0.15 % of the max. capacity.

MATERIAL
High-tensile steel, zinc coated and white chromated.
Extra: polyester lacquering.

INTERNATIONAL PROTECTION
SPECIFICATION CLASS
IP 67 acc. to IEC 529.

TEMPERATURE RANGE
+4°F +158°F (-20°C - +70°C).

OVERLOAD
50 % without affecting the accuracy.

SAFETY FACTOR
5:1.

CABLE
Screened, 13 ft. (4 m) length as a standard.

EXTENSION CABLE
Optional; complete with connections in 17 ft. (5 m) or 33 ft. (10 m) lengths.

INSTRUMENT LI 300

GRADUATION
ton and kN, or ton and lb.

DISPLAY
LCD, 0-19999, height of figures 12 mm.

TEMPERATURE RANGE
+4°F +158°F (-20°C - +70°C).

TAREING
0-100%.

CAPACITY/ RESOLUTION
LLI 2 2 lb. (1 kg)
LLI 3 2 lb. (2 kg)
LLI 5 5 lb. (2 kg)
LLI 10 10 lb. (5 kg)
LLI 20 10 lb. (10 kg)
LLI 50 50 lb. (20 kg)
LLI 75 100 lb. (50 kg)

BATTERY
9 V (6LR61), alkaline or lithium.

OPERATING TIME
Approx. 50 hours with a lithium battery.

INTERNATIONAL PROTECTION
SPECIFICATION CLASS
IP 65. ABS plastic with case.

CONNECTION
7-pin plug for transducer cable.

POWER CONSUMPTION
21 mA.

MISCELLANEOUS
Peak hold. A 6-wire system with sensing compensates for voltage drop over long cable lengths between transducer and instrument. The displayed value is not affected by the cable length. Weight: approx. 0.55 lb. (0.25 kg) without case.